

Chemical Hydraulic Valve

STEAM JACKET VALVE

- Standard Valve With Steam Jacket
- Replaceable Teflon® Seat
- Removable-Replaceable Disc
- All Seals PTFE
- 2 Piece Replaceable Stem

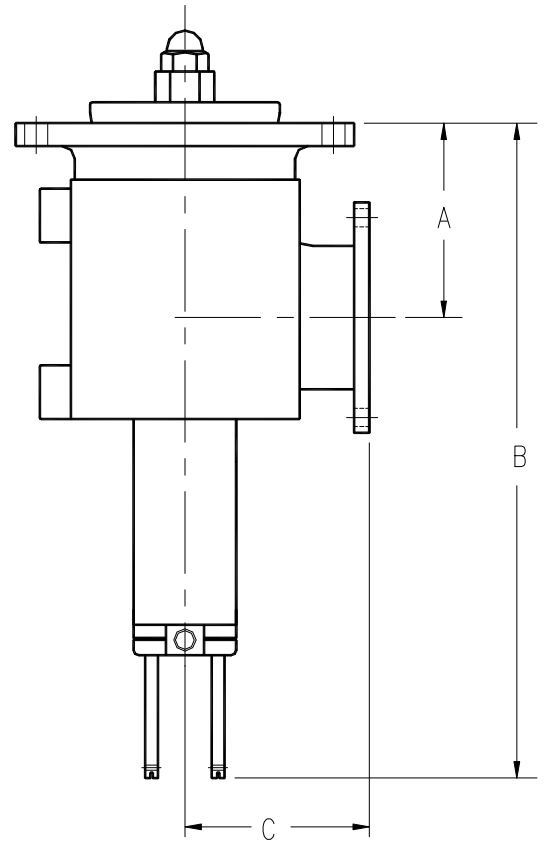
The Steam Jacketed Chemical Hydraulic Valve is designed for use with a wide variety of chemicals. A replaceable Teflon® seat and removable disc are provided for ease in repairing should damage occur from dirt or other foreign material. A heavy mounting flange is provided to insure a flat gasketing surface. The steam jacket is fitted with two ¾" NPT fittings.

¼ NPT Hydraulic connection conveniently located at the base of the piston cylinder. Indicator pins, which move in relation to the piston, show the position of the disc at all times.

This valve does NOT contain a shear section. The cargo tank must protect the valve by providing suitable protection as specified in 49 CFR 178.345-8(2).

1,500 psi minimum hydraulic line pressure required to operate valve, but do not exceed 3,000 psi hydraulic line pressure.

See section 35 Page 2D for parts list



4 X 3 SHOWN

Size	Assembly No.	Material *	Inlet Flange		Outlet		Dimensions			Wt. (lbs.)	Temp. Range	MAWP
			B.C.	Holes	B.C.	Holes	A	B	C			
4x3 90° Elbow	CH46966SST	316 SS	7.25"	8-9/16	4 7/8	8-7/16	4 3/4	16	4 1/2	33	-40°F to +400°F	50
	CH46966LHT	316 SS w/ Hastelloy trim**					4 3/4	16	4 1/2			
4x4 90° Elbow	CH46960SST	316 SS			5 7/8	7 5/8	7 5/8	16	7 7/8	34.5		
	CH46960LHT	316 SS w/ Hastelloy trim**										

* Material listing is for all wetted surfaces exposed to product during normal operation of valve.

** Hastelloy trimmed valves includes hastelloy C-276 upper stem half (5), hastelloy C-22 trimmed disc (3), & body trimmed w/ hastelloy C-22 in the area in contact w/ the seat (6).

Suffix "017" indicates Teflon Seat w/ Double Tef-Sil O-Ring.

NOTE: A flat mounting surface must be provided for valve seat flange. Recommended mounting pad is MP19752LC, see section 40. For hydraulic pump and distributor, see page 3B or 3C.