

Hydrolet Valve

QUICK CLEAN STYLE

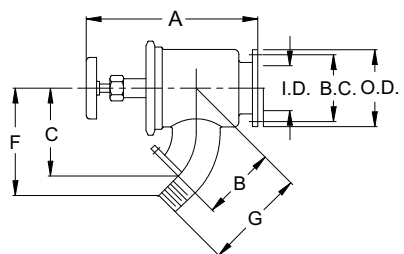
EXCLUSIVE QUICK CLAMP

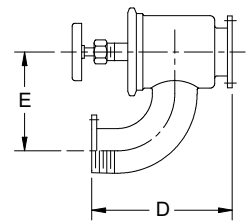
SEAMLESS CONSTRUCTION

EASILY CLEANED

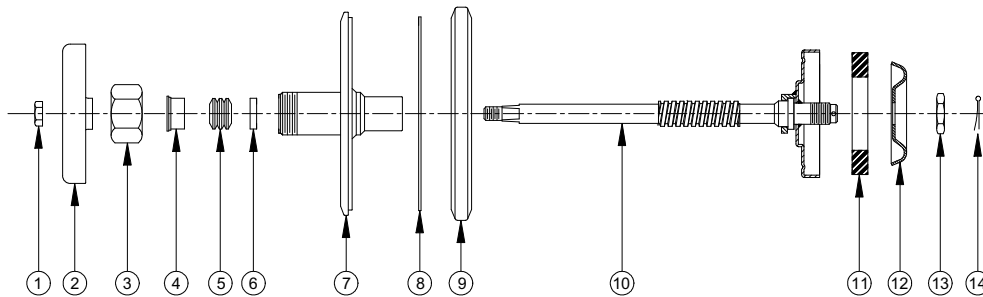
The Betts Q.R.B. Quick Clean Hydrolet Valve with the Quick-Removable Bonnet and seamless construction is a valve designed for quick dismantling and easy cleaning. Valve is available in the two styles shown below. Valve comes standard with Teflon disc, packing and gasket.

Pressure & Temperature Rating: 35 PSI and 250°F, maximum working pressure and temperature.

Dimensions			
	Size	Assembly No.	Wt. Material
3"	QC763SST Flanged Outlet	16.0 316 stnls.	
3"	QC773SST Threaded Outlet	16.0 316 stnls.	

		
Assembly No.	Wt.	Material
QC703SST Flanged Outlet	17.5	316 stnls.
QC713SST Threaded Outlet	17.5	316 stnls.

Size	A	B	C	D	E	F	G	Flanged Inlet & Outlet				Thd. Outlet
								I.D.	O.D.	B.C.	Holes	Pipe Size
3"	12½	5½	6 ⁷ / ₁₆	11	7½	7 ¹³ / ₁₆	7½	3 ³ / ₈	5 ⁵ / ₈	4 ¹ / ₈	8 ⁻ / ₁₆	3"



Parts List

No.	Description	Req'd	Material	Part No.	No.	Description	Req'd	Material	Part No.
1	⁷ / ₁₆ -14UNC-2A Hex Nut	1	Steel	9Q8580	8	Tophead Gasket	1	Teflon	15977TF
2	Handwheel	1	Alum.	25186AL	9	Clamp Ring Assembly	1	Stnls.	25683SL
3	Stuffing Box Nut	1	Stnls.	15026SL	10	Disc Holder & Stem Assembly	1	Stnls.	17683SS
4	Top Gland	1	Stnls.	15220SS	11	Disc	1	Teflon	15202TF
5	Teflon Packing	1	Teflon	19649TF	12	Disc Retainer Plate	1	Stnls.	17028SS
6	Bottom Gland	1	Stnls.	15076SS	13	Disc Plate Nut	1	Stnls.	15204SS
7	Tophead & Bonnet	1	Stnls.	16126SS	14	¹ / ₈ X 1 Cotter Pin	1	Stnls.	9Q5867

NOTE: For complete replacement sub-assembly (items 1-14) order Part No. WV17625SST.

HYDROLET VALVES

Q.R.B. HYDROLET
Quick Removable Bonnet

EXCLUSIVE QUICK CLAMP

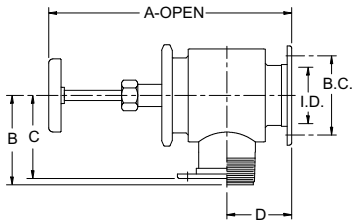
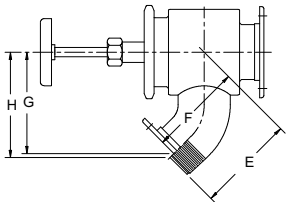
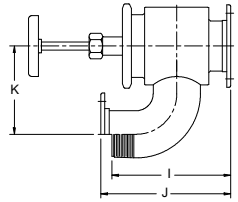
VERSATILE

EASILY CLEANED

The Betts Q.R.B. Hydrolet Valve with the Quick-Removable Bonnet, is designed for use on transport tanks hauling a variety of products, where easy dismantling for cleaning and inspection are essential. Valve is available in the three styles shown below in 3" and 4" sizes with flanged or threaded outlets.

Pressure And Temperature Rating: Valves are rated at 35 PSI maximum working pressure. Temperature varies as to which packing, gasket & disc material is used. Valves with Teflon, Viton or Non-Asbestos are rated at 250°F maximum working temperature. Valves with Buna-N are rated at 150°F maximum working temperature.

Section D
Stainless Trailer Parts

DIMENSIONS	FLANGED			THREADED			THREADED				
	Size	Assembly No.	Wt.	Material	Assembly No.	Wt.	Material	Assembly No.	Wt.	Material	
	3"	QR723ALB	9.3	Alum.	QR763ALB	9.5	Alum.	QR703ALB	10.3	Alum.	
		QR723SST	15.0	Stnls. 316	QR763SST	15.3	Stnls. 316	QR703SST	16.0	Stnls. 316	
	4"	QR724ALB	13.0	Alum.	QR764ALB	14.0	Alum.	QR704ALB	14.3	Alum.	
		QR724SST	19.8	Stnls. 316	QR764SST	20.3	Stnls. 316	QR704SST	20.5	Stnls. 316	
	3"	QR733ALB	8.8	Alum.	QR773ALB	9.0	Alum.	QR713ALB	10.0	Alum.	
		QR733SST	14.0	Stnls. 316	QR773SST	14.3	Stnls. 316	QR713SST	15.0	Stnls. 316	
	4"	QR734ALB	13.0	Alum.	QR774ALB	14.0	Alum.	QR714ALB	14.3	Alum.	
		QR734SST	19.8	Stnls. 316	QR774SST	20.3	Stnls. 316	QR714SST	20.5	Stnls. 316	
		3"	QR733ALB	8.8	Alum.	QR773ALB	9.0	Alum.	QR713ALB	10.0	Alum.
			QR733SST	14.0	Stnls. 316	QR773SST	14.3	Stnls. 316	QR713SST	15.0	Stnls. 316
4"	QR734ALB	13.0	Alum.	QR774ALB	14.0	Alum.	QR714ALB	14.3	Alum.		
	QR734SST	19.8	Stnls. 316	QR774SST	20.3	Stnls. 316	QR714SST	20.5	Stnls. 316		

NOTE: Stainless 316 valves are standard with Teflon disc, gasket & packing (Suffix "T"). Aluminum valves are standard with Buna-N disc, cork-buna-N gasket and Teflon packing (Suffix "B"). For variations and replacement parts see section 10, page 5B.

Dimensions

Size	A	B	C	D	E	F	G	H	I	J	K	Flange-Inlet & Outlet			Thd. Outlet
												I.D.	B.C.	Holes	Pipe Size
3"	15	5½	5 ¹ / ₈	4	6 ⁹ / ₁₆	6¼	6¾	7	8 ¹³ / ₁₆	9 ⁵ / ₈	6½	3 ³ / ₈	4 ¹ / ₈	8- ¹ / ₁₆	3"
4"	15 ³ / ₁₆	6 ¹ / ₁₆	5	4 ⁵ / ₁₆	8 ¹ / ₈	7¾	8 ⁵ / ₁₆	8 ⁹ / ₁₆	10 ⁹ / ₁₆	10¼	8	4 ³ / ₈	5 ¹ / ₈	8- ¹ / ₁₆	4"

HYDROLET VALVES

STEAM JACKETED

Quick Removable Bonnet

STEAM JACKETED

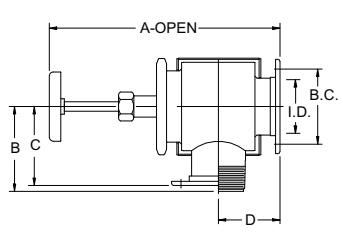
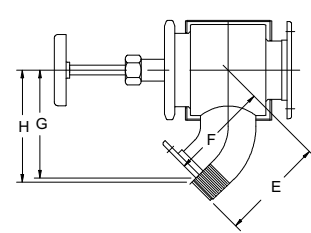
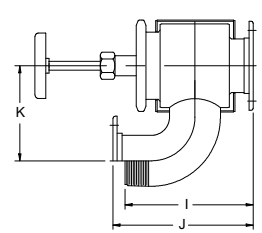
VERSATILE

EXCLUSIVE QUICK CLAMP

EASILY CLEANED

The Betts Steam Jacketed Q.R.B. Hydrolet Valve is designed to handle heavy, viscous liquids or other special products. The Quick-Removable Bonnet permits faster removal of internal parts for cleaning and inspection. This valve is available in the three styles shown below in 3" or 4" sizes with flanged or threaded outlets.

Pressure And Temperature Rating: Valves are rated at 35 PSI maximum working pressure. Temperature varies as to which packing, gasket & disc material is used. Valves with Teflon, Viton or Non-Asbestos are rated at 250°F maximum working temperature. Valves with Buna-N are rated at 150°F maximum working temperature. Steam jacket rated at 150 PSI maximum working pressure.

DIMENSIONS	FLANGED			THREADED			FLANGED			THREADED			
	Size	Assembly No.	Wt.	Material	Assembly No.	Wt.	Material	Assembly No.	Wt.	Material	Assembly No.	Wt.	Material
	3"	JQ723SST	18.0	Stnls. 316	JQ763SST	18.6	Stnls. 316	JQ703SST	18.9	Stnls. 316	JQ713SST	18.9	Stnls. 316
	4"	JQ724SST	25.0	Stnls. 316	JQ764SST	26.5	Stnls. 316	JQ704SST	27.3	Stnls. 316	JQ714SST	27.3	Stnls. 316
	3"	JQ733SST	18.0	Stnls. 316	JQ773SST	18.6	Stnls. 316	JQ713SST	18.9	Stnls. 316	JQ713SST	18.9	Stnls. 316
	4"	JQ734SST	25.0	Stnls. 316	JQ774SST	26.5	Stnls. 316	JQ714SST	27.3	Stnls. 316	JQ714SST	27.3	Stnls. 316
	3"	JQ733SST	18.0	Stnls. 316	JQ773SST	18.6	Stnls. 316	JQ713SST	18.9	Stnls. 316	JQ713SST	18.9	Stnls. 316
	4"	JQ734SST	25.0	Stnls. 316	JQ774SST	26.5	Stnls. 316	JQ714SST	27.3	Stnls. 316	JQ714SST	27.3	Stnls. 316

NOTE: Stainless 316 valves are standard with Teflon disc, gasket & packing (Suffix "T"). For variations and replacement parts see section 10, page 5B. Jacket material on stainless valves is of a stainless 304 material. Steam connections are 1/2" NPT.

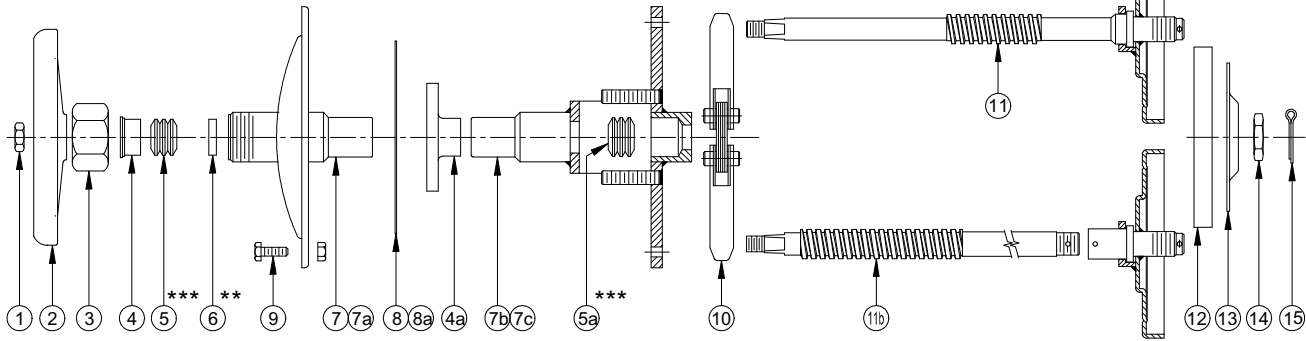
Dimensions

Size	A	B	C	D	E	F	G	H	I	J	K	Flange-Inlet & Outlet			Thd. Outlet
												I.D.	B.C.	Holes	Pipe Size
3"	15	5 1/2	5 1/8	4	6 9/16	6 1/4	6 3/4	7	8 13/16	9 5/8	6 1/2	3 3/8	4 1/8	8 - 1/16	3"
4"	15 3/16	6 7/16	5	4 3/16	8 1/8	7 3/4	8 5/16	8 9/16	10 9/16	10 1/4	8	4 3/8	5 1/8	8 - 1/16	4"

Hydrolet Valves

PARTS LIST

Hydrolet Valves



No.	Description	Req'd.	Size	Material	Part No.
1	Hex Nut $\frac{7}{16}$ -14 Thd.	1	3"-4"	Steel Zinc Plt.	9Q8579
				304 Stnls	9Q8580
2	Handwheel	1	3"	Aluminum	25186AL
			4"	Aluminum	25245AL
3	Stuffing Box Nut	1	3"-4"	Aluminum	15026AL
			304 Stnls	15026SL	
4	Top Gland	1	3"-4"	316 Stnls	15220SS
4a	Top Gland OS&Y Style	1	3"-4"	304 Stnls	16758SL
5***	Teflon Packing	1	3"-4"	Teflon	19649TF
5a***	Teflon Packing	1	3"-4"	Teflon	19648TF
6**	Bottom Gland	1	3"-4"	316 Stnls	15076SS
7	Tophead & Bonnet Bolted Style	1	3"	Steel	15382MS
				Aluminum	15382AL
				Steel	25365MS
7a	Tophead & Bonnet QRB Style	1	3"	Aluminum	25365AL
				316 Stnls	15573SS
				Aluminum	15573AL
7b	Tophead & Bonnet QRB OS&Y	1	3"	316 Stnls	16126SS
				Aluminum	16126AL
				316 Stnls	26133SS
7c	Tophead & Bonnet Bolted OS&Y	1	3"	Aluminum	26133AL
				316 Stnls	26138SS
				Aluminum	26138AL
8	Tophead Gasket Bolted Style	1	3"	Steel	26145MS
				Aluminum	26145AL
				Steel	26150MS
8a	Tophead Gasket QRB Style	1	3"	Aluminum	26150AL
				Cork-Buna-N	15022CB
				Non-Asbestos	15022NA
8b	Tophead Gasket Bolted OS&Y	1	4"	Teflon-Env.	15022TF
				Cork-Buna-N	15265CB
				Non-Asbestos	15265NA
8c	Tophead Gasket QRB OS&Y	1	4"	Teflon-Env.	15265TF
				Cork-Buna-N	15265CB
				Non-Asbestos	15265NA

No.	Description	Req'd.	Size	Material	Part No.
8a	Tophead Gasket QRB Style	1	3"	Cork-Buna-N	15905CB
			4"	Teflon-Env.	15905TF
9	Bolts & Nuts (Sets)	Set	3"	Cork-Buna-N	15977CB
			4"	Teflon-Env.	15977TF
10	QRB Clamp	1	3"	Steel Zinc Plt.	15023ZC
			4"	18-8 Stnls	15023SL
11	Disc Holder & Stem Assy. Bolted & QRB Style	1	3"	Steel Zinc Plt.	16549ZC
			4"	18-8 Stnls	16549SL
11a	Disc Holder & Stem Assy. OS&Y Style	1	3"	304 Stnls	25641SL
			4"	304 Stnls	25683SL
12	Disc	1	3"	All Aluminum	17683AL
				All Steel	17683MS
				All Stnls	17683SS
			4"	All Aluminum	17684AL
				All Steel	17684MS
				All Stnls	17684SS
13	Disc Retaining Plate	1	3"	Steel	28003MS
				316 Stnls	28003SS
				Steel	28004MS
			4"	316 Stnls	28004SS
				Buna-N	15202BU
				Non-Asbestos	15202NA
14	Disc Plate Nut	1	3"-4"	Teflon	15202TF
				Viton	15202VT
				Buna-N	15024BU
			4"	Non-Asbestos	15024NA
				Teflon	15024TF
				Viton	15024VT
15	Cotter Pin $\frac{1}{8}$ x1	1	3"-4"	316 Stnls	17028SS
			1"	316 Stnls	15051MS
15	Cotter Pin $\frac{1}{8}$ x1	1	3"-4"	Aluminum	15051AL
			3"-4"	316 Stnls	15051SS
15	Cotter Pin $\frac{1}{8}$ x1	1	3"-4"	316 Stnls	15204SS
15	Cotter Pin $\frac{1}{8}$ x1	1	3"-4"	316 Stnls	9Q8567

** This part note req'd. on OS&Y Models

* 2 Req'd. on OS&Y Models

*** Note:

No. 5 used with Std. Bonnet Models only.
No. 5a used with OS&Y Models only.

HYDROLET SUB-ASSEMBLIES

Size	Hydrolet Material	Bolted Style	Bolted OS&Y Style	QRB Style	QRB-OS&Y Style
3"	Steel	WV17593MSB	WV17607MSB		
	Aluminum	WV17593ALB	WV17607ALB	WV17609ALB	WV17611ALB
	316 Stnls.			WV17609SST	WV17611SST
4"	Steel	WV17594MSB	WV17608MSB		
	Aluminum	WV17594ALB	WV17608ALB	WV17610ALB	WV17612ALB
	316 Stnls.			WV17610SST	WV17612SST

NOTES: Cotter pins only provided on sub-assemblies ordered with either Teflon or Non-Asbestos disc.

Bolted sub-assemblies do not include QRB clamp (Item #10)

QRB sub-assemblies do not include Bolts & Nuts (Item #9)

Steel and Aluminum sub-assemblies are standard with Buna-N disc, Cork-Buna-N Gasket and Non-Asbestos packing (Suffix "B").

Stainless sub-assemblies are standard with Teflon disc, packing and gasket (Suffix "T").

VARIATIONS: (Suffix "A"-Bolted Style) when used would include non-asbestos disc, packing and gasket.

(Suffix "A"-QRB Style) when used would include non-asbestos disc, packing and teflon gasket.

(Suffix "V"-Bolted or QRB Style) when used would include viton disc, teflon packing and gasket.