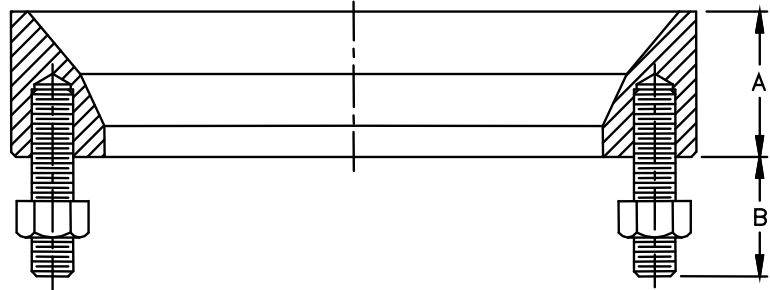


# Mounting Pad

MOUNTING PAD

- HEAVY CROSS SECTION INSURES FLAT SURFACE
- REMOVABLE STUDS
- CLEAN INTERIOR SURFACE
- PHONOGRAPHIC GASKET SURFACE



Section D  
Stainless Trailer Parts

These Mounting Pads are designed and recommended for all styles of Hydraulic Valves or other valves utilizing a metal-to-metal or Teflon® seat. Please note special stud length required for the Internal Hydraulic Valve CH47003SST or CH45843SST.

The pad is designed with a heavy cross section to eliminate warpage, which may be transmitted to the valve seat causing leakage. The studs are removable. The pad has a clean interior surface, free of discoloration that occurs when studs are welded and the gasket surface has a phonographic finish for improved sealing.

Mill Test Reports for ASME code work are furnished for all stainless mounting pads.

### Dimensions

Size	A	B	O.D.	I.D.	B.C.	No. Studs	Size Studs
4"	1 3/4	See Below	8 1/4	6	7 1/4	8	1/2 x 13

Size	Description	Material	Wt.	Part No.
4"	Mounting Pad "B" Dimension 1- <sup>7</sup> / <sub>16</sub> "	**Stnls 316L	10.9	MP19752LC
		Aluminum	4.5	MP16590AL
* 4"	Mounting Pad "B" Dimension 2- <sup>3</sup> / <sub>4</sub> "	**Stnls 316L	11.2	MP19741LC
		Aluminum	4.8	MP16914AL
4"	Mounting Pad Only No Studs	**Stnls 316L	9.7	MP19688LC
		Aluminum	3.4	MP17322AL

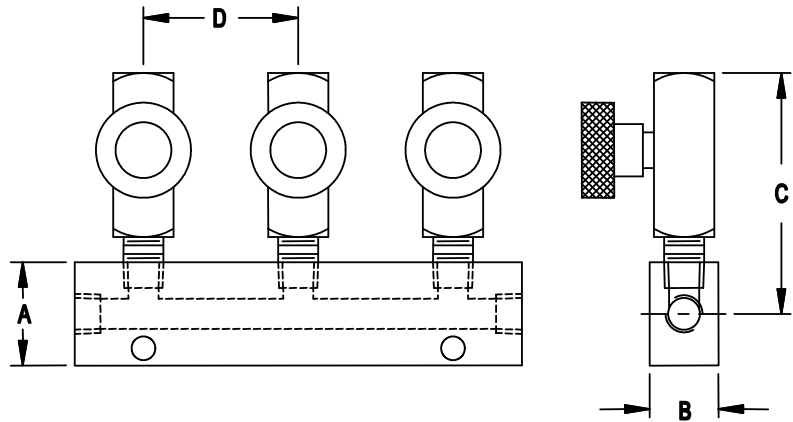
\*Mounting Pad designed for Internal Hydraulic Valve CH47003SST or CH45843SST.

\*\*Forged material conforms to ASME SA182 F316L.  
Studs conform to SA193 B8M CL1.  
Maximum Allowable Working Pressure 150 psi.  
Temperature Range -425°F to 600°F.

**ACCESSORIES**

# Hydraulic Distributor

The hydraulic distributor consists of a multiple compartment manifold with individual control valves for each compartment. The special control valves limit flow to designated compartments yet allows free for flow of fluid back to manifold block even if control valve is closed. This ensures all emergency valves will close if fusible or frangible remote control is tripped.



See Engineering Bulletin 3-2003 for detailed schematic.

Description	Wt.	Part No.
2 Compartment	1.8	CH16283-2MS
3 Compartment	2.7	CH16283-3MS
4 Compartment	3.6	CH16283-4MS
5 Compartment	4.5	CH16283-5MS
6 Compartment	5.4	CH16283-6MS

**DIMENSIONS**

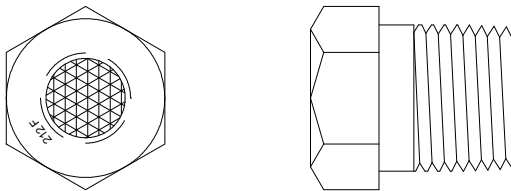
A	B	C	D
1.5"	1"	4"	2.25"

NOTE: All connections 1/4 N.P.T.

Section D  
Stainless Trailer Parts

**FUSIBLE PLUG**

Assy. No. FP15003BR

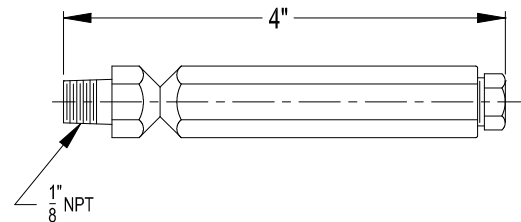


Thawing 220-225°F

Thawing of a plug dumps air and closes all emergency valves and air operated vents.

**FUSIBLE & FRANGIBLE PLUG**

Assy. No. FP15017BR



Breaking of frangible device or thawing of plug dumps air and closes all emergency valves and air operated vents.