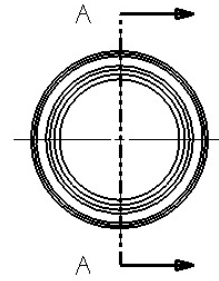
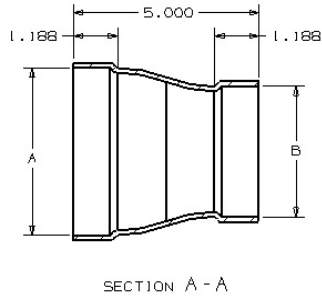


# BELLED CONCENTRIC REDUCERS



DESCRIPTION, MATERIAL & WEIGHT				DIMENSIONS		
Pipe Size	Material	Part Number	Wt. (Lbs.)	Thickness	A	B
2 x 1 1/2	Steel	11280	.63	.0598	2 21/32	1 29/32
	304 Stainless	S 11280	.63	.0598		
	316 Stainless	SS 11280	.63	.0598		
2 1/2 x 2	Steel	20339	.7	.0598	2 29/32	2 13/32
	304 Stainless	S20339	.7	.0598		
	316 Stainless	SS20339	.7	.0598		
	Aluminum	20340	.6	.125		
3 x 2	Steel	20288	.9	.0598	3 17/32	2 13/32
	304 Stainless	S20288	.9	.0598		
	316 Stainless	SS20288	.9	.0598		
	Aluminum	20341	.7	.125		
3 X 2 1/2	Steel	20338	1.0	.0598	3 17/32	2 13/32
	304 Stainless	S20338	1.0	.0598		
	316 Stainless	SS20338	1.0	.0598		
	Aluminum	20342	.8	.125		
4 x 3	Steel	20286	1.2	.0598	4 17/32	3 17/32
	304 Stainless	S20286	1.2	.0598		
	316 Stainless	SS20286	1.2	.0598		
	Aluminum	20343	1.0	.125		
6 x 4	Steel	20289	2.1	.0747	6 43/64	4 17/32
	304 Stainless	S20289	2.1	.0747		
	316 Stainless	SS20289	2.1	.0747		
	Aluminum	20344	1.6	.125		

## SPECIFICATIONS

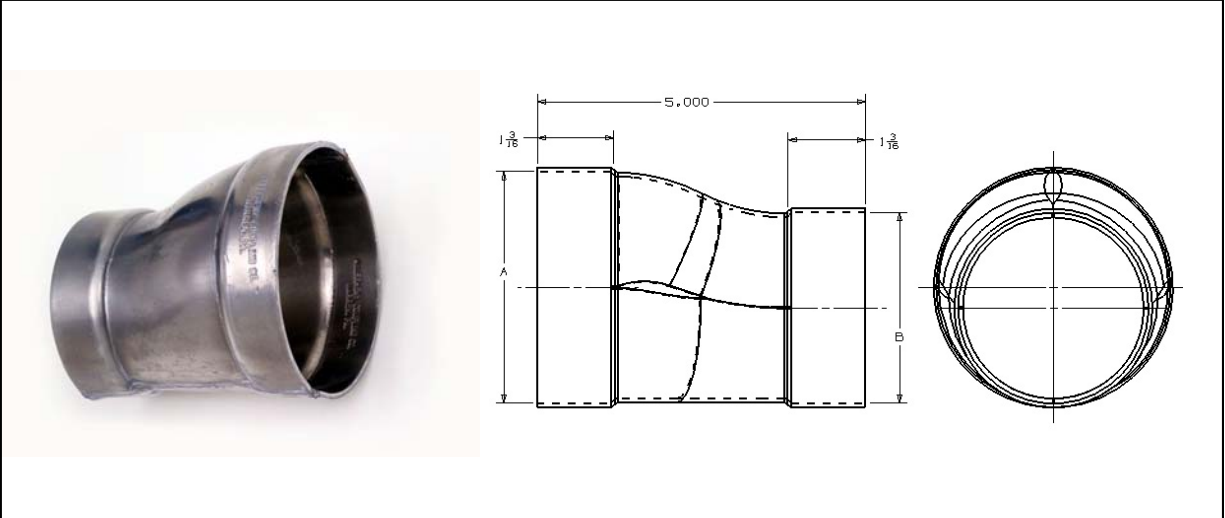
1. Belled ends Provide Better piping alignment, faster installation
2. Smooth interiors (no projections into the flow area).
3. Streamlined for greater flow and greater strength.
4. Lightweight and strong; made from metal stampings longitudinally butt-welded (not edge-welded) for greater strength.



Allegheny Coupling Company  
 P.O. Box 708  
 419 W. Third Ave.  
 Warren PA, 16365

Phone: 814-723-8150  
 Fax: 814-723-8400  
 Web: <http://www.alleghenycoupling.com>

# BELLED ECCENTRIC REDUCERS



DESCRIPTION, MATERIAL & WEIGHT				DIMENSIONS		
Pipe Size	Material	Part Number	Wt. (Lbs.)	Thickness	A	B
2 1/2 x 2	Steel	20509	.7	.0598	2 29/32	2 13/32
	304 Stainless	S20509	.7	.0598		
	316 Stainless	SS20509	.7	.0598		
3 x 2	Steel	20374	.9	.0598	3 17/32	2 13/32
	304 Stainless	S20374	.9	.0598		
	316 Stainless	SS20374	.9	.0598		
	Aluminum	20510	.7	.125		
3 X 2 1/2	Steel	20413	1.0	.0598	3 17/32	2 29/32
	304 Stainless	S20413	1.0	.0598		
	316 Stainless	SS20413	1.0	.0598		
4 x 3	Steel	20350	1.2	.0598	4 17/32	3 17/32
	304 Stainless	S20350	1.2	.0598		
	316 Stainless	SS20350	1.2	.0598		
	Aluminum	20431	.9	.125		
6 x 4	Steel	20425	2.1	.0747	6 43/64	4 17/32
	304 Stainless	S20425	2.1	.0747		
	316 Stainless	SS20425	2.1	.0747		
	Aluminum	41282	1.2	.125		

## SPECIFICATIONS

1. Belled ends Provide Better piping alignment, faster installation
2. Smooth interiors (no projections into the flow area).
3. Streamlined for greater flow and greater strength.
4. Lightweight and strong; made from metal stampings longitudinally butt-welded (not edge-welded) for greater strength.



Allegheny Coupling Company  
 P.O. Box 708  
 419 W. Third Ave.  
 Warren PA, 16365

Phone: 814-723-8150  
 Fax: 814-723-8400  
 Web: <http://www.alleghenycoupling.com>