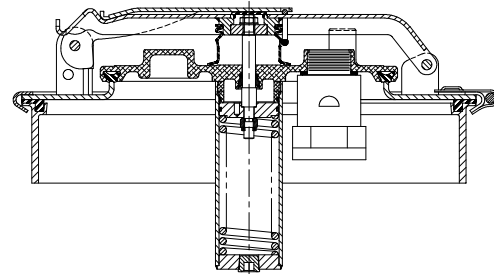
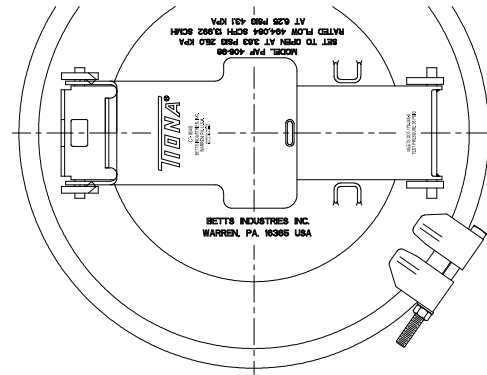




16" PAF 406-98 MANHOLE

With Integral Relief Valve/10" Fill

- INTEGRAL RELIEF VALVE/10" FILL
- LESS THAN 1 LITER LEAKAGE
- SET PRESSURE ADJUSTMENT
- INCREASED FLOW RATE
- SECONDARY SAFETY LATCH



MODEL L816-STANDARD  
MODEL L842-SELF LATCHING

Pressure Relief Valve setting 3.63 psig
Rated Pressure Actuated Emergency Venting: 494,084 cu. ft. free air per hour @ 6.25 psig
Rated Liquid Flow Capacity 1335 gpm @ 5.0 psig

PAF manholes with integral latch style surge suppression relief valves are designed for use on DOT406 and replacement on MC306 specification cargo tanks. Manholes are certified and marked in accordance with 49CFR178.345-5 with a test pressure of 36 psig. Manhole covers are 7 gage steel or stainless and are secured to the tank weld collar with a clamp ring and bolt which can be easily removed to provide access into the tank.

The integral 10" Relief Valve provides emergency pressure relief and meets the 1 liter surge leakage limit imposed by 49CFR178.345-10(b)(3)(ii). The relief valve also serves as a 10" latch style fill which can be easily opened to provide access for filling the tank or for inspection. Relief valves contain an adjustment feature to allow for fine tuning of set pressure in the field. Other standard features include a heavy duty clamp ring, secondary safety latch and model 6496ALB pressure-vacuum vent mounted in the 10" relief valve cover.

Manholes are available with a self-latching feature that allows the 10" relief valve/fill cover to drop and securely latch upon movement of the tank if the cover is inadvertently left open. For self-latching model substitute L742 for L716 in assembly number.

Cover Plate	Relief Valve	Clamping Ring, Bolt, Washer, Strongback, & Latch	Clamping Ring Nut	Normal Vent	Wt. (lb.)	Assembly No.
Steel Zinc Plt.	Alum.	Steel Zinc Plt.	Brass	Alum.	24.2	PPVL716BXB
Stnls 304	Alum.	Stnls 304	Stnls 304	Alum.	24.7	PPVL716CXB
Stnls 316	Alum.	Stnls 304	Stnls 304	Alum.	24.7	PPVL716DXB

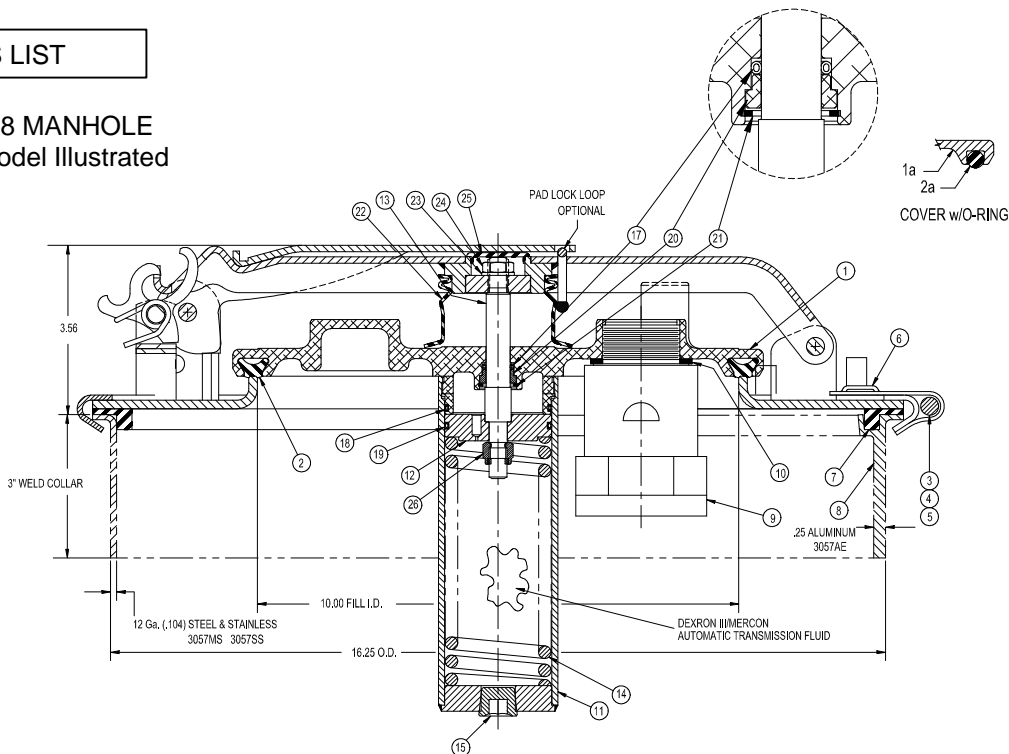
Note: Manhole assemblies, as listed above, have Buna-N gaskets (suffix "B"). For variation in gasketing change last letter of assembly number as follows.

- Suffix "V" indicates Viton collar gasket & Viton 10" fill gasket
- Suffix "W" indicates White Hypalon collar gasket & White Hypalon 10" fill gasket
- Suffix "T" indicates Teflon envelope collar gasket & Tef-Sil 10" fill o-ring

Manhole collars are available in aluminum, steel, and stainless steel. Please see parts page for correct numbers. When welding collars to tank, care should be exercised to insure collar remains flat and round.

PARTS LIST

16" PAF 406-98 MANHOLE  
Self-Latching Model Illustrated



No.	Description	Material	Part No.
1	Fill Cover	Alum/E-Coated	8297ALEY
1a	Fill Cover (O-Ring Grvd.)	Alum/E-Coated	8297ALEY389
2	Gasket - Integral Relief Valve	Buna-N	3119BN
		Viton	3119VT
		Wh. Hypalon	3119WH
2a	O-Ring	Tef-Sil	3902TS
3	Bolt-Clamp Ring	Steel Zinc Plt.	3029ZC
		Stnls 304	3029SL
4	Nut-Clamp Ring	Brass	3030BR
		Stnls 304	9Q5809
5	Washer-Clamp Ring	Steel Zinc Plt.	3031ZC
		Stnls 304	3031SL
6	Clamping Ring	Steel	3028MS
		Steel Zinc Plt.	3028ZC
		Stnls 304	3028SL
7	Manhole Gasket Channel Type	Buna-N	3559BN
		Viton	3559VT
		Wh. Hypalon	3559WH
		Teflon Env. w/ Wh. Hypalon	3025TF
8	Manhole Collar Channel Type	Steel	3057MS
		Aluminum	3057AE
		Stnls 304	3057SL
		Stnls 316	3057SS

No.	Description	Material	Part No.
9	Vent Assembly	Aluminum	6496ALB
10	Gasket	Buna-N	3716BN
11	Cylinder Assembly	Aluminum	6657AL
12	Piston	Aluminum	6654AL
13	Stem	Stnls 304	6688SL
14	Spring	Steel	4122MS
15	1/2" NPT Plug Zinc Plt.	Steel Zinc Plt.	9V4907
17	Stem O-Ring -112	Buna-N	4118BN
18	Cylinder O-Ring -137	Buna-N	4015BN
19	Piston O-Ring -137	Tef-Sil	4015TS
20	O-Ring Retainer	Alum/E-Coated	4117ALEY
21	Retainer Ring	Stnls 304	9Q4961
22	Bellows	EPDM	4020EPDM
23	Lockwasher Ext. Tooth 1/16"	Stnls 304	9Q5961
24	Nut Hex 1/16x20	Stnls 304	9Q5960
25	Plastic Plug	Polyethylene	9Z6163
26	3/8-16 Hex Nut w/ Insert	Steel Zinc Plt.	9Q5896

Gasket Maximum Temperature	
Buna-N (Nitrile)	250°F
Viton	400°F
White Hypalon	250°F
Teflon-Silicone	400°F
Teflon Envelope w/ White Hypalon Insert	250°F

Replace oil cylinder using Automatic Transmission Fluid Dexron III/Mercon, SAE 5W-20 with viscosity of 177 SUS at 100°F and a pour point of no greater than -45°F.

MAINTENANCE: Manhole assemblies should be inspected with sufficient frequency to insure 10" Integral Relief Valve functions properly. Any worn, damaged or missing parts must be replaced. Gaskets should be replaced if their effectiveness to insure a liquid tight seal is impaired in any way. Replacement gaskets must be compatible with products carried.

WARNING Consult PAF406-98 maintenance manual prior to disassembly of this relief valve.

Use only genuine Betts Industries Inc. replacement parts. Use of substitute parts can impair the proper functioning of this product.