

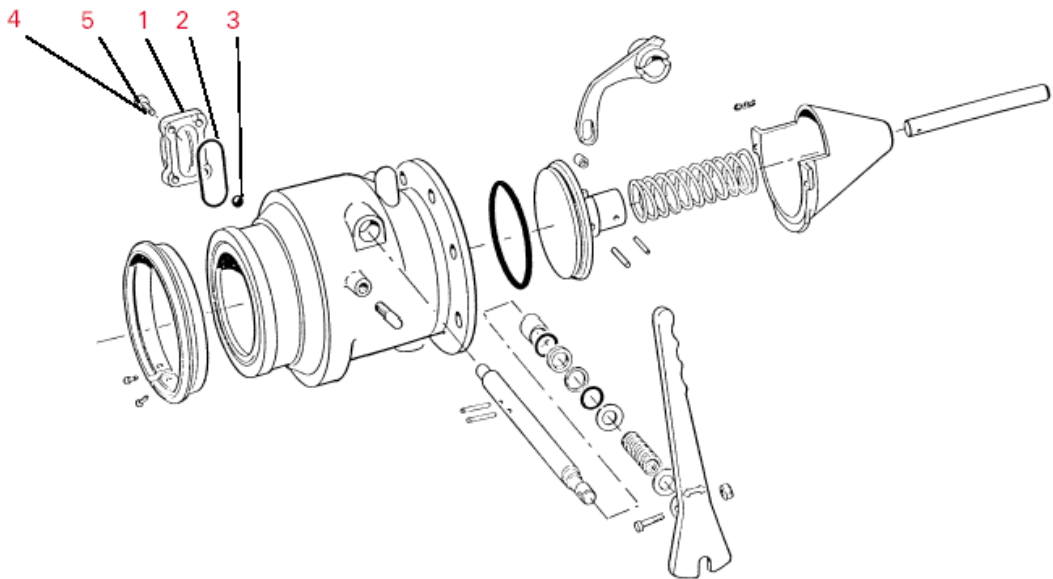
Sight Glass Service Kit for F5002 Viton

Service kit : 619499

REPLACING THE SIGHT GLASS

1. Remove existing sight glass (**item 1**) and inspect valve body for damage.
2. Lightly grease O-Ring (**item 2**) and fit into groove on sight glass.
3. Trap plastic indicator ball (**item 3**) inside sight glass and fit to valve body.
4. Ensure that shakeproof washers (**item 4**) are fitted to screws (**item 5**).
5. **Important-** Tighten screws evenly, in stages, to ensure o-Ring settles in the correct position.
6. Check for leak tightness.

DESCRIPTION	PART NO	QTY
O-Ring	577105	1
Hollow Plastic Ball	850092	1
Sight Glass	618148	1
Taptite Screw	602747	4
M6 Shakeproof Washer	616399	4



As a part of a continuous commitment to product development the company reserves the right to alter the specification of its products without prior notice

Service Kit for F5001/2 Viton**Service kit : 619504****SERVICING AN API ADAPTOR**

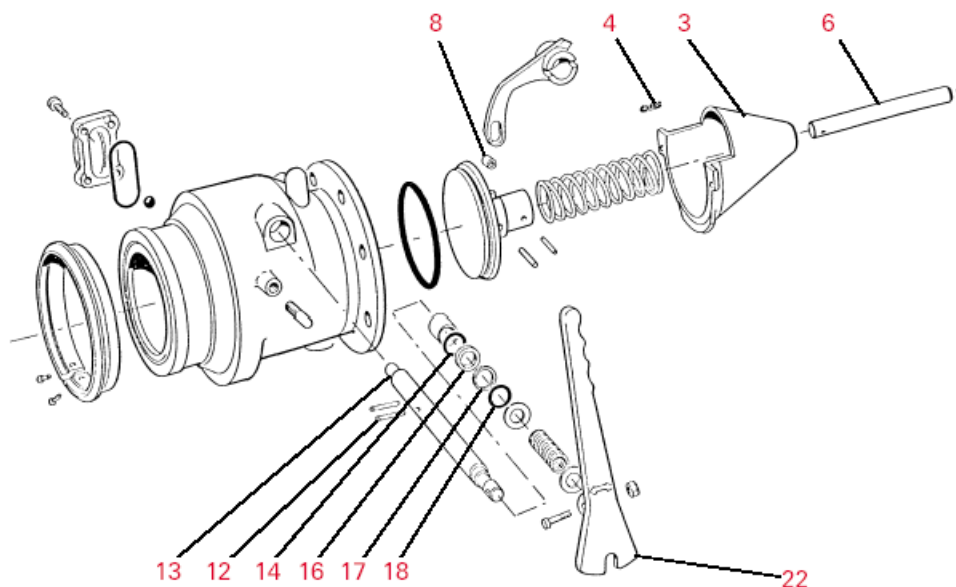
1. Remove handle (item22) remove circlip & seals from shaft (items14, 16, 17, 18).
2. Drive out roll pins (item12) and pull out shaft.
3. Remove spring clips retaining cone (item4).
4. Carefully twist cone and remove.

CAUTION CONE IS UNDER SPRING PRESSURE

5. Remove the spring, poppet and cam, clean body and examine for wear and damage.
6. Refit with new seals making sure all seal areas are clean and free of damage.
7. To reassemble reverse above, observing the following notes :

Apply magnalube-G grease to stem (item6), cone (item3), Roller (item8) and to shaft (item13) at gland end and bearing end.

DESCRIPTION	PART NO	QTY
O-Ring	850037	1
Roll Pin	561852	2
Large Bearing	409443	1
O-Ring	407433	1
O-Ring	561320	1
Nylon Washer	564275	1
O-Ring	577105	1



As a part of a continuous commitment to product development the company reserves the right to alter the specification of its products without prior notice

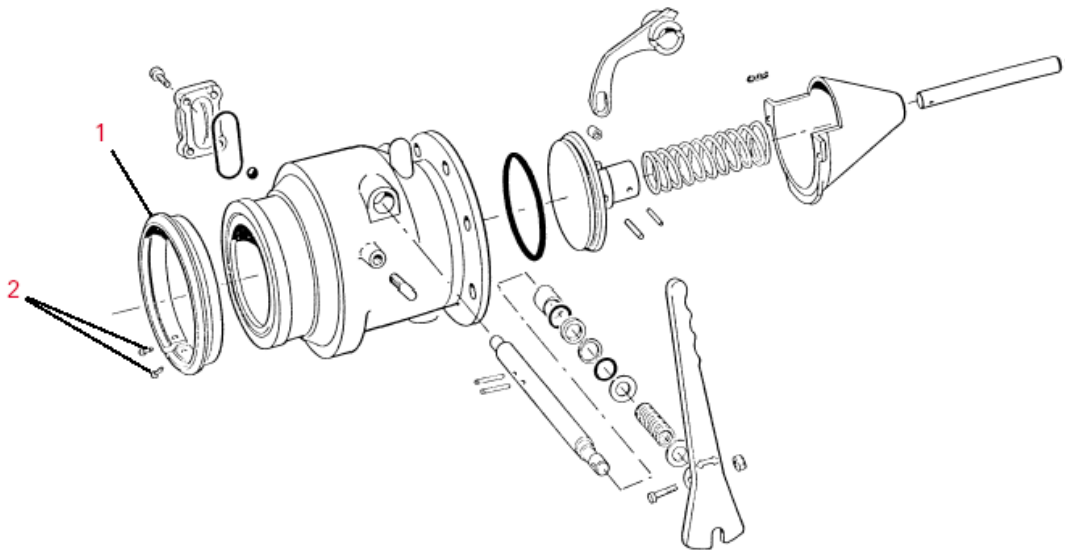
Nose Ring Service Kit for F5000/1/2

Service kit : 619506

FITTING A NEW NOSE RING

1. Remove Screws (item2) and old nose ring (item1).
2. Open slot gap in the new ring to approx 15mm width to allow ring to pass over nose profile.
3. Before fitting ring apply even coating of grease (molykote longterm 2+ or equivalent) to entire contact area.
4. Fit new ring (item1) and compress to minimise slot gap.
5. Insert screws (item 2) ensuring that ring and body are correctly aligned.
6. Do not overtighten screws, torque to 5Nm + 0,5Nm (44.3 ibf in/ 3.68 ibf ft).

DESCRIPTION	PART NO	QTY
Anodised Nose Ring	619323	1
M5 C/Sunk Screw	619370	2



As a part of a continuous commitment to product development the company reserves the right to alter the specification of its products without prior notice

API Service Kit for F5000/1/2 PTFE**Service kit : 619632****SERVICING AN API ADAPTOR**

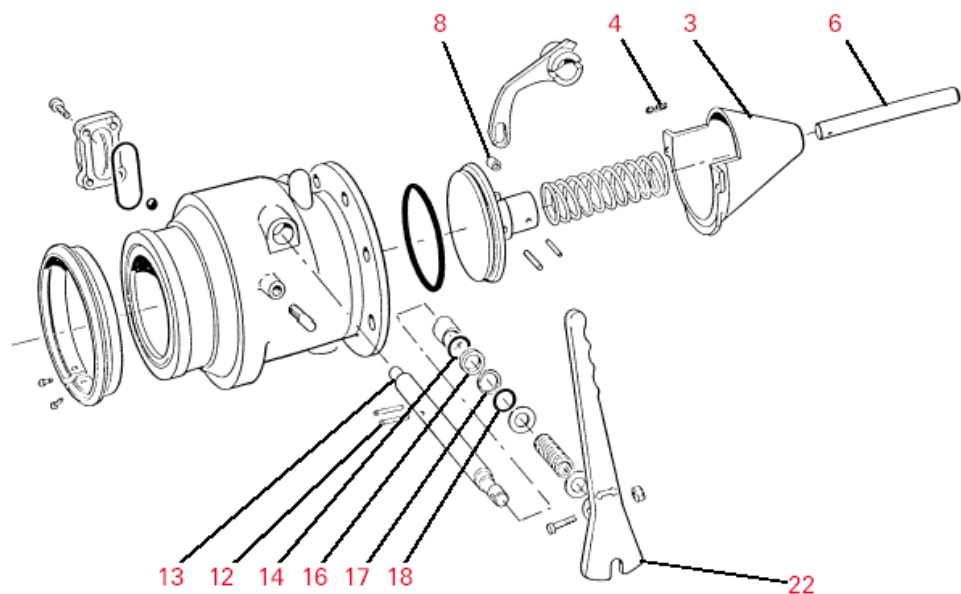
1. Remove handle (item22) remove circlip & seals from shaft (items14, 16, 17, 18).
2. Drive out roll pins (item12) and pull out shaft.
3. Remove spring clips retaining cone (item4).
4. Carefully twist cone and remove.

CAUTION CONE IS UNDER SPRING PRESSURE

5. Remove the spring, poppet and cam, clean body and examine for wear and damage.
6. Refit with new seals making sure all seal areas are clean and free of damage.
7. To reassemble reverse above, observing the following notes :

Apply magnalube-G grease to stem (item6), cone (item3), Roller (item8) and to shaft (item13) at gland end and bearing end.

DESCRIPTION	PART NO	QTY
O-Ring	619410	1
Roll Pin	561852	2
Large Bearing	409443	1
PTFE "U" Seal	577191	1
O-Ring	561320	1
Nylon Washer	564275	1
O-Ring	577105	1



As a part of a continuous commitment to product development the company reserves the right to alter the specification of its products without prior notice

Service Kit for F5000/1/2 Viton**Service kit : 619927****SERVICING AN API ADAPTOR**

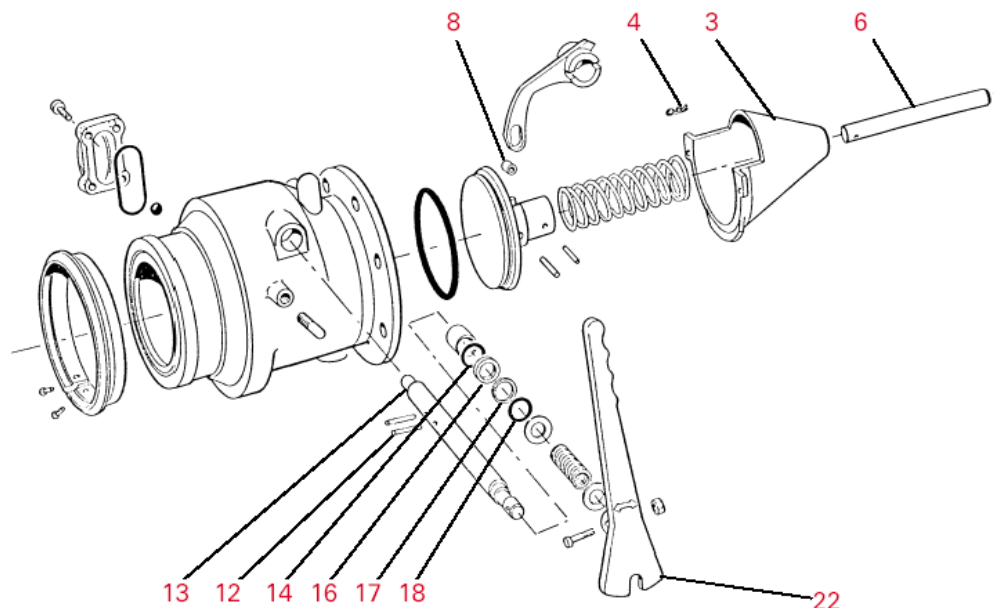
1. Remove handle (item22) remove circlip & seals from shaft (items14, 16, 17, 18).
2. Drive out roll pins (item12) and pull out shaft.
3. Remove spring clips retaining cone (item4).
4. Carefully twist cone and remove.

CAUTION CONE IS UNDER SPRING PRESSURE

5. Remove the spring, poppet and cam, clean body and examine for wear and damage.
6. Refit with new seals making sure all seal areas are clean and free of damage.
7. To reassemble reverse above, observing the following notes :

Apply magnalube-G grease to stem (item6), cone (item3), Roller (item8) and to shaft (item13) at gland end and bearing end.

DESCRIPTION	PART NO	QTY	Service Kit 619927 Is Used On The F5000001, F5001001& F5002001
O-Ring	850037	1	



Handle & Shaft Service Kit for F5001/2 Viton

Service kit : 670085

Replacing The Handle and Shaft

1. Unscrew the nut (item 13) and remove the screw (item 15). Remove the handle (item 14), washers (item 16) and spring (item 17) Remove seal (item 18) and Circlip (item 19).
2. Turn API (item 2) over carefully onto its front, then drive out the two pins (item 22). Now remove the shaft. Remove seals (items 20,21) from the shaft. Next remove the spring clips (item 7) and carefully twist the cone (item 8) and remove.

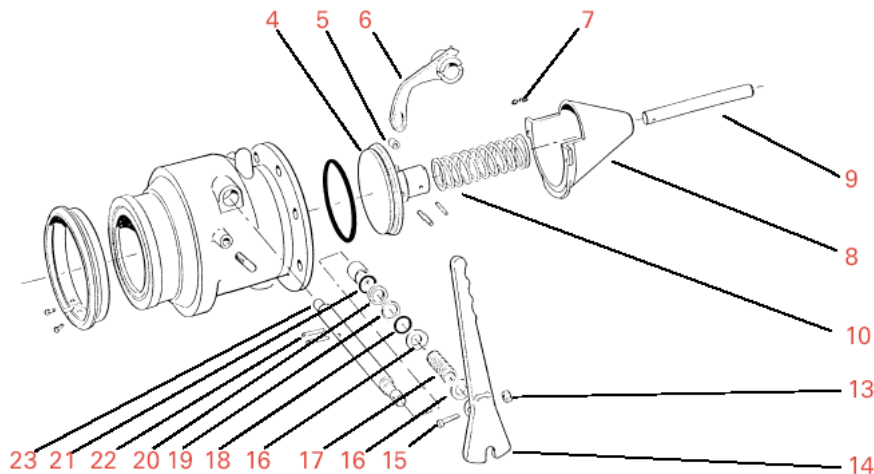
CAUTION CONE IS UNDER SPRING PRESSURE

3. Remove the spring (item 10), poppet (item 4) and cam (item 6) Clean body and examine for wear and damage. Replace parts
4. To reassemble reverse the above, observing the following note:

Apply Magnalube-G grease to stem (item 9) and cone (item 8)
Apply to roller (item 5) and to the shaft (item 23) at the gland end and bearing end.

DESCRIPTION	PART NO	QTY	Service Kit 670085 Is Used OnThe F5001001,F5002001
-------------	---------	-----	---

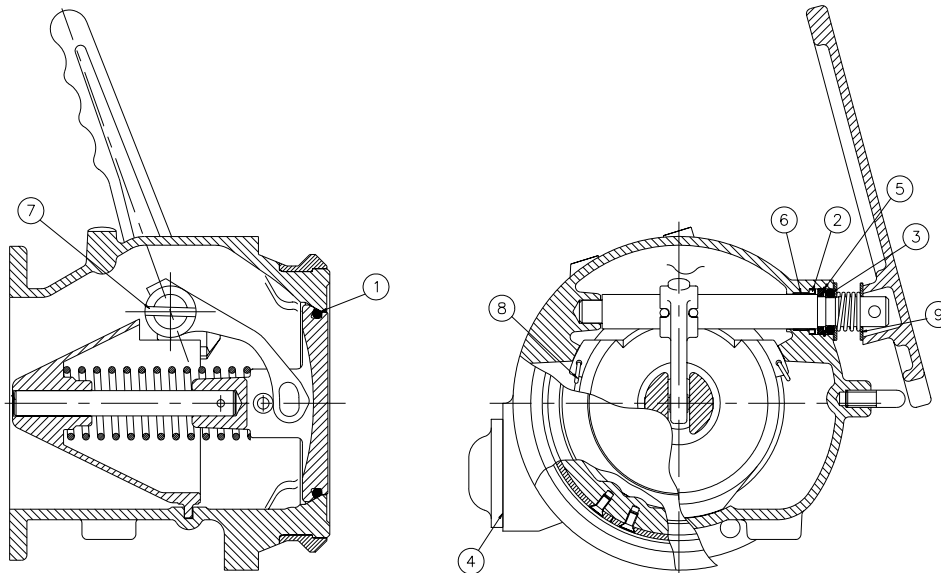
Lever	619314	1
Screw	564278	1
Nut	564277	1
Spring	564273	1
Nylon Washer	564275	2
O-Ring	561320	1
Ring	408169	1
Spacer	408167	1
O-Ring	407433	1
Roll Pin	561852	1
Shaft	619316	1
Bearing	409443	1



As a part of a continuous commitment to product development the company reserves the right to alter the specification of its products without prior notice

Service Kit for F5002 PTFE

SERVICE KIT: 670562			
DET	PART No	QTY	DESCRIPTION
1	619410	1	POPPET O-RING
2	577191	1	SHAFT SEAL
3	561320	1	SHAFT O-RING
4	577253	1	SIGHT GLASS O-RING
5	408169	1	CIRCLIP – SHAFT
6	409443	1	BEARING SHAFT
7	561852	2	ROLL PIN
8	560489	2	HAIR PIN CLIP
9	564275	2	NYLON WASHER



TO DISASSEMBLE INTERNALS FOR SEAL & O-RING REPLACEMENT.

Remove handle, circlip & seals from shaft. Drive out roll pins and pull out shaft. Remove spring clips retaining cone and remove.

CAUTION CONE IS UNDER SPRING PRESSURE.

Remove old O-rings and shaft bearing. Fit new poppet O-ring (det.1) ensure O-ring is not marked or damaged. Before fitting O-ring ensure poppet and API seats are clean and free from damage. Fit new shaft seal (det.2), shaft O-ring (det.3), bearing (det.6) and circlip (det.5).

To reassemble reverse above procedure replacing roll pin (det.7) and hair pin clips (det.8).

Note recommended to apply magnalube-G grease to stem and cone roller and to shaft at gland end and bearing end, cam bearing face and sides.

To replace sight glass O-ring.

Remove sight glass ensure not to misplace ball remove O-ring, discard and fit new O-ring (4)

As a part of a continuous commitment to product development the company reserves the right to alter the specification of its products without prior notice