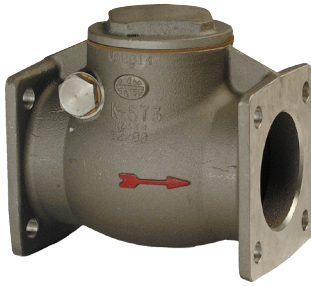


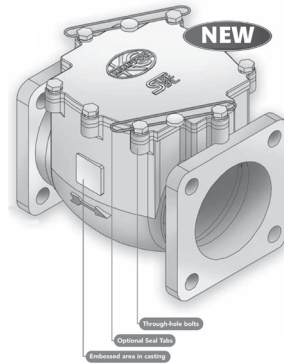
Check Valves

Knappco



- VA0009-VA0012 - 3" alum flanged
- VA0013-VA0016 - 3" alum flanged spring loaded
- VA0017-VA0020 - 3" alum threaded
- VA0021-VA0024 - 3" alum threaded spring loaded

Sure-Seal



VC3022

- 3" Alum Body
- Flanged
- Silicon seat
- Spring Loaded

This will replace all Knappco check valves in the future.

Milwaukee



- P509-112**
1 1/2" threaded bronze - brass/viton
- P509-2**
2" threaded bronze - brass/viton
- P509-3**
3" threaded bronze - brass/viton



- P2519A**
3" flanged
alum/alum/viton



- P728**
3" threaded
alum/alum/viton
spring loaded



- P729**
3" flanged
alum/alum/viton
spring loaded



- P717F**
2" angled flanged
alum/alum/viton
spring loaded



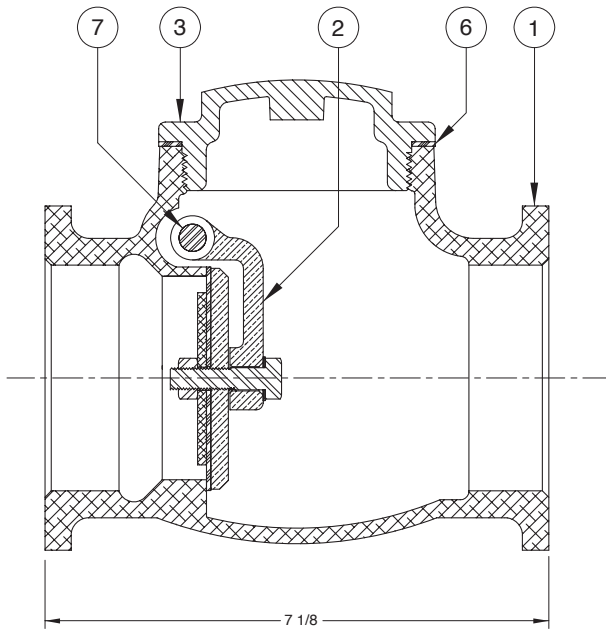
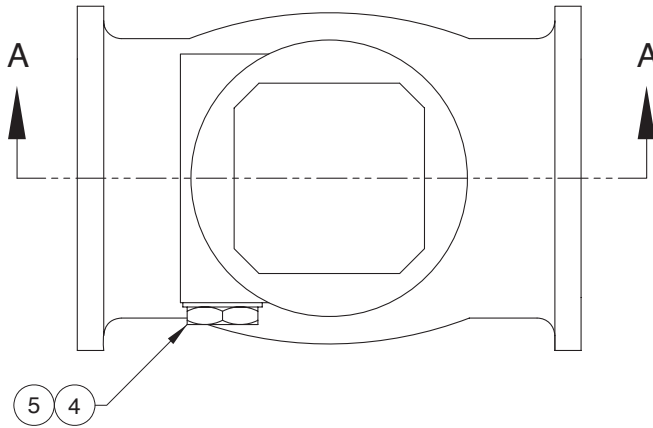
- P717S**
2" angled threaded
bronze/alum/viton
spring loaded

Bayco

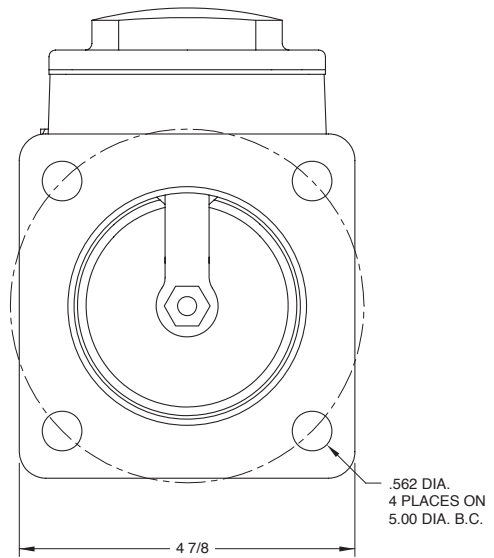


- 3000TESP** - 3" threaded alum/brass spring loaded
- 3001SQ** - 3" flanged alum/brass
- 3001SQSP** - 3" flanged alum/brass spring loaded
- 3090MA** - 3" manifold check w/3" adapter

VA0009-VA0012 3" Check Valve (Flanged)



SECTION A-A



ITEM	PART NUMBER	DESCRIPTION	QTY.
1	4379	BODY (ALUMINUM FLANGED)	1
2	SEE CHART	POPPET ASSY (BRASS / BUNA)	1
3	1727 ¹	CAP (CALVANIZED STEEL)	1
4	1729B ²	SHAFT NUT (BRASS, PLATED)	1
5	1730	SHAFT NUT GASKET (HI-TEMP.)	1
6	1731	CAP GASKET (HI-TEMP.)	1
7	1734	SHAFT (S.S.)	1

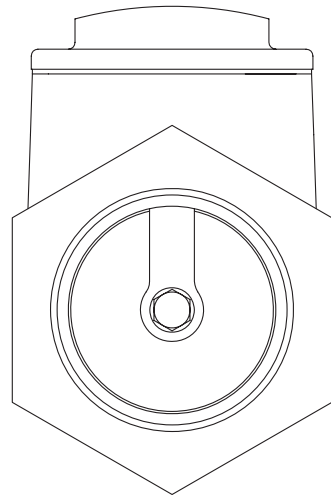
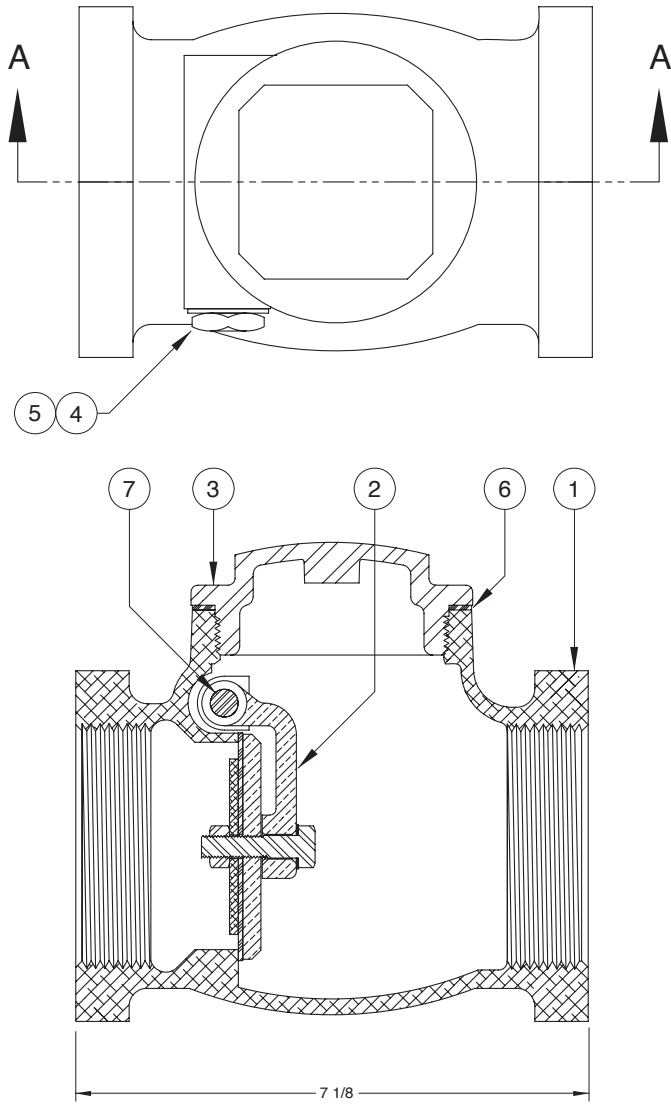
SEALING MEDIA / MATERIAL CHART		
ASSY P/N	POPPET P/N	DESCRIPTION
VA0009	1722A	POPPET ASSY (BRASS / BUNA)
VA0010	1739A	POPPET ASSY (S.S. / BUNA)
VA0011	1724A	POPPET ASSY (BRASS / VITON)
VA0012	1740A	POPPET ASSY (S.S. / VITON)

1 - ALSO AVAILABLE IN ALUM. (P/N 1733) 2 - ALSO AVAILABLE IN ALUM. (P/N 1735)

Section C
Dry Bulk Trailer Parts

VA00017-VA00020 3" Check Valve (Threaded)

Section C
Dry Bulk Trailer Parts



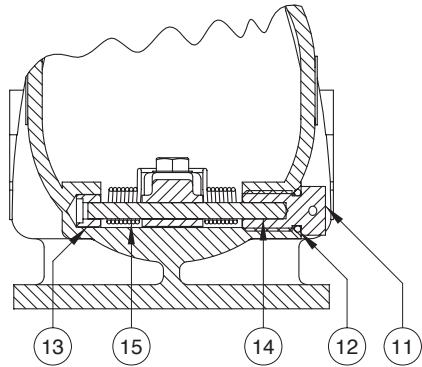
SECTION A-A

ITEM	PART NUMBER	DESCRIPTION	QTY.
1	1726	BODY (ALUMINUM THREADED)	1
2	SEE CHART	POPPET ASSY (BRASS / BUNA)	1
3	1727 ¹	CAP (CALVANIZED STEEL)	1
4	1729B ²	SHAFT NUT (BRASS, PLATED)	1
5	1730	SHAFT NUT GASKET (HI-TEMP.)	1
6	1731	CAP GASKET (HI-TEMP.)	1
7	1734	SHAFT (S.S.)	1

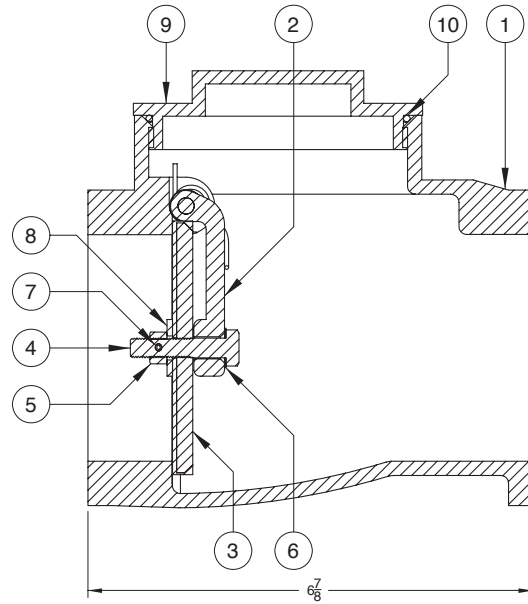
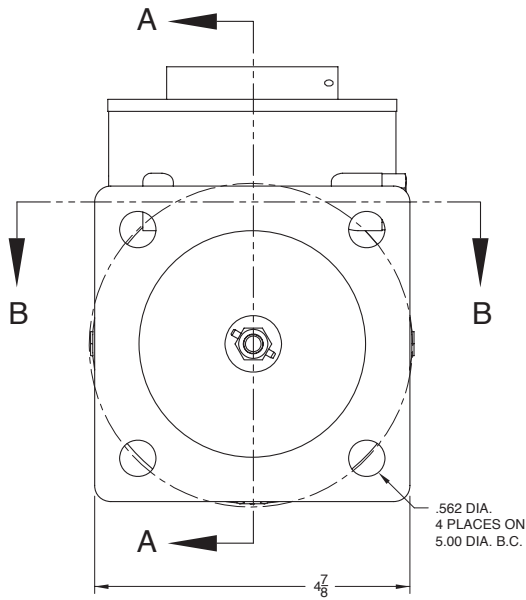
SEALING MEDIA / MATERIAL CHART		
ASSY P/N	POPPET P/N	DESCRIPTION
VA0017	1722A	POPPET ASSY (BRASS / BUNA)
VA0018	1739A	POPPET ASSY (S.S. / BUNA)
VA0019	1724A	POPPET ASSY (BRASS / VITON)
VA0020	1740A	POPPET ASSY (S.S. / VITON)

1 - ALSO AVAILABLE IN ALUM. (P/N 1733) 2 - ALSO AVAILABLE IN ALUM. (P/N 1735)

VA1015FG 3" Check Valve



SECTION B-B



SECTION A-A

ITEM	PART NUMBER	DESCRIPTION	QTY.
1	9572	BODY	1
2	9945	POPPET ARM ¹	1
3	9781	POPPET (BRONZE / SILICONE) ¹	1
4	9894	SCREW ¹	1
5	9895	HEX NUT ¹	1
6	4714	WASHER (BELLEVILLE) ¹	1
7	9896	SPRING PIN ¹	1
8	1159	WASHER (FLAT) ¹	1
9	10096	CAP	1
10	9897	CAP O-RING (VITON)	1

ITEM	PART NUMBER	DESCRIPTION	QTY.
11	10077	GLAND NUT	1
12	9902	GLAND O-RING (VITON)	1
13	9578	BUSHING	1
14	9574	PIVOT ROD	1
15	9944	SPRING	1

REPAIR KITS		
PART NUMBER	DESCRIPTION	QTY.
9946	POPPET ASSY (BRONZE / SILICONE)	N/A

Section C
Dry Bulk Trailer Parts

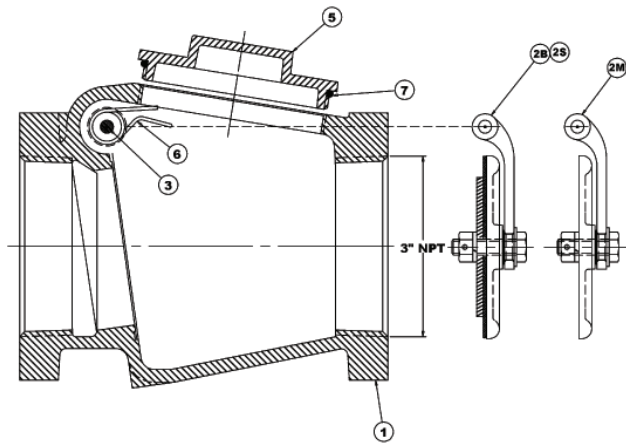
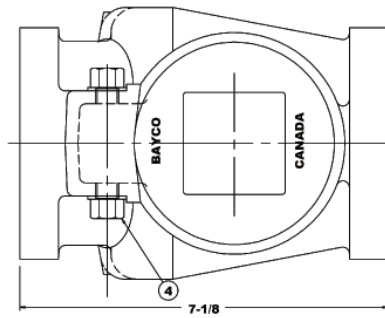
Bayco

Bayco Classic 3000 Series 3" Swing Check Valves

3000 Threaded and 3001 Square Flange Units

Bill of Materials

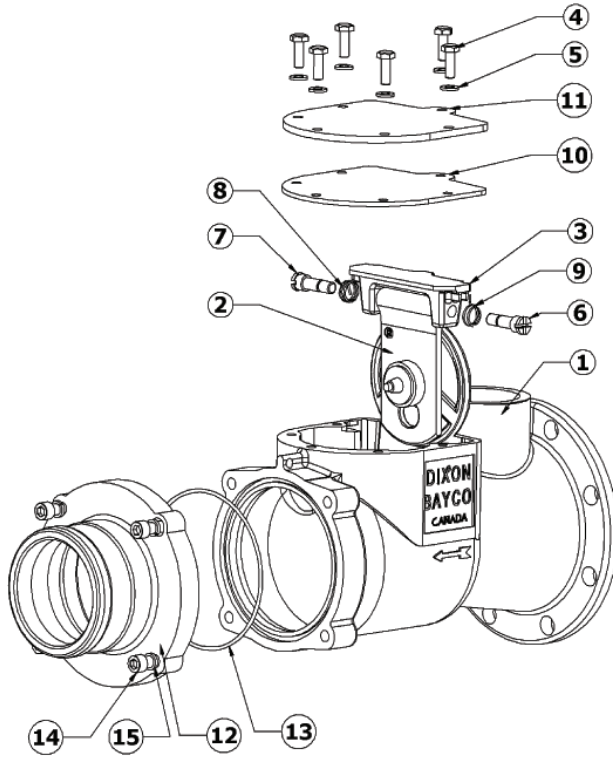
Item #	Description	Part #	Qty
1	swing check body	---	1
2M	valve flapper assembly with metal seal	use kit 300-SPK	1
2B	valve flapper assembly with Buna seal	use kit 300-BSPK	1
2S	valve flapper assembly with Silicone seal	use kit 300-SSPK	1
3	shaft	3000-4	1
4	shaft nut	3000-5	2
5	clean out cap	363000-10	1
6	spring (for units with spring return flapper)	SPRG/L4603	1
7	clean out cap O-ring seal	O-RINGAS238	1



Repair Kits

Part #	Description	Includes item #s
300-SSPK	silicone seal flapper assembly, shaft, nuts, flapper spring and clean out cap O-ring seal	2S, 3, 4, 6, 7
300-SK	silicone seal flapper assembly, shaft, nuts and clean out cap O-ring seal	2S, 3, 4, 7
300-BSPK	buna seal flapper assembly, shaft, nuts, flapper spring and clean out cap O-ring seal	2B, 3, 4, 6, 7
300-BK	buna seal flapper assembly, shaft, nuts and clean out cap O-ring seal	2B, 3, 4, 7
300-SPK	metal seal flapper assembly, shaft, nuts, flapper spring and clean out cap O-ring seal	2M, 3, 4, 6, 7
300-K	metal seal flapper assembly, shaft, nuts and clean out cap O-ring seal	2M, 3, 4, 7

Bayco High Flow 3090 Series Swing Check Manifold Valves
 Round Flange x Adapter, Round Flange x 4" FNPT



Bill of Materials

Item #	Description	Part #	Qty
1	swing check manifold body	---	1
2A	valve flapper assembly red silicone (3090M, 3090MA, 3090MB and 3090F)	use kit 3090RK3	1
2B	valve flapper assembly metal seal (3091MA)	use kit 3091RK2	1
3	flapper valve yoke	341595	1
4	bolt	use kit 3030HK	6
5	lock washer	use kit 3030HK	6
6	left hand shaft	390799	1
7	right hand shaft	390798	1
8	right hand spring	use kit 3030RK3	1
9	left hand spring	use kit 3030RK3	1
10	cover gasket	111932	1
11	cover	341611	1
12A	3" adapter outlet (for 3090MA, 3090MAS & 3091MA)	6000-16	1
12B	4" adapter outlet (for 3090MB, & 3090MBS)	6000-17	1
12C	4" FNPT Outlet (for 3090F)	6000-20	1
13	adapter outlet O-ring	3090RK1	1
14	adapter outlet hex bolt	use kit 6000NPHK	4
15	adapter outlet lock washer	use kit 6000NPHK	4

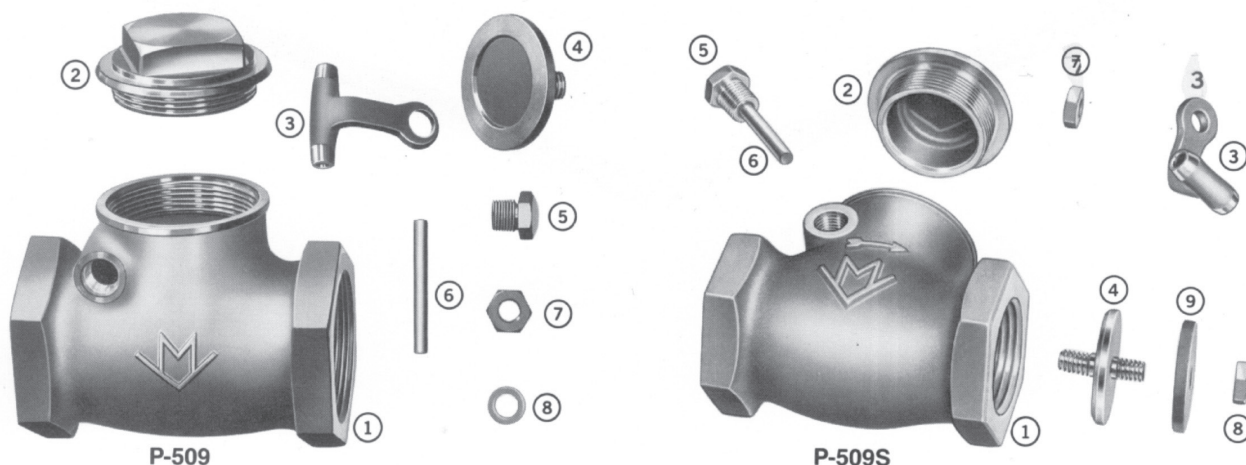
Repair Kits

Part #	Description	Includes item #s
3090RK1	adapter outlet O-ring	13
3090RK3	replacement red silicone flapper kit, flapper assembly, yoke, springs, shafts, cover gasket (for 3090M, 3090MA, 3090MB and 3090F)	2A, 3, 6, 7, 8, 9, 10
3091RK2	replacement metal seal flapper kit, flapper assembly, yoke, springs, shafts, cover gasket (for 3091MA)	2B, 3, 6, 7, 8, 9, 10
3090RK2	complete rebuild kit, red silicone flapper assembly, yoke, springs, shafts, cover gasket, bolts and lock washers (for 3090M, 3090MA, 3090MB and 3090F)	2A, 3, 4, 5, 6, 7, 8, 9, 10
3091RK1	complete rebuild kit, metal seat flapper assembly, yoke, springs, shafts, cover gasket, bolts and lock washers (for 3091MA)	2B, 3, 4, 5, 6, 7, 8, 9, 10
3030HK	replacement cover bolts and lock washers	4, 5
3030RK3	replacement left and right springs	8, 9
3030SK	optional: 2 drilled bolts (similar to item 4) with wire tamper resistant seal	not illustrated
6000NPHK	outlet bolts and lock washers	14, 15

Section C
Dry Bulk Trailer Parts

**CHECK P-509, P-509S
REPAIR PARTS LIST**

Section C
Dry Bulk Trailer Parts



P-509 Only

No.	DESCRIPTION	SIZE-INCHES/PART NUMBER									
		1/4	3/8	1/2	3/4	1	1 1/4	1 1/2	2	2 1/2	3
1	Body	1516-B	1516-C	1516-D	1516-E	1516-F	1516-G	1516-H	1516-J	1516-K	1516-L
2	Cap	4046-D	4046-D	4046-D	4046-E	4046-F	4046-G	4046-H	4046-J	4046-K	4046-L2
3	Lever	44148-B	44148-B	44148-B	4404-E	4404-F	4404-G	4404-H	4404-J	4405-K	4405-L
4	Bronze Disc	38290-D	38290-D	38290-D	38290-E	38290-F	38290-G	38290-H	38290-J	3871-K	3871-L
5	Plug	4210-B	4210-B	4210-B	4210-E	4210-F	4210-F	4210-H	4210-J	4210-L	4210-L
6	Pin	5979-B	5979-B	5979-B	5979-C	5979-D	5979-E	5979-F	5979-H	5979-L	5979-L
7	Disc Retainer	52125-185	52125-185	52125-185	52125-185	52125-185	52125-185	52125-239	52125-239	3177-K	3177-L
8	Washer	--	--	--	--	--	--	--	--	3813-K	3813-L
*9	Disc Assembly	84109-D	84109-D	84109-D	84109-E	84109-F	84109-G	84109-H	84109-J	84109-K	84109-L

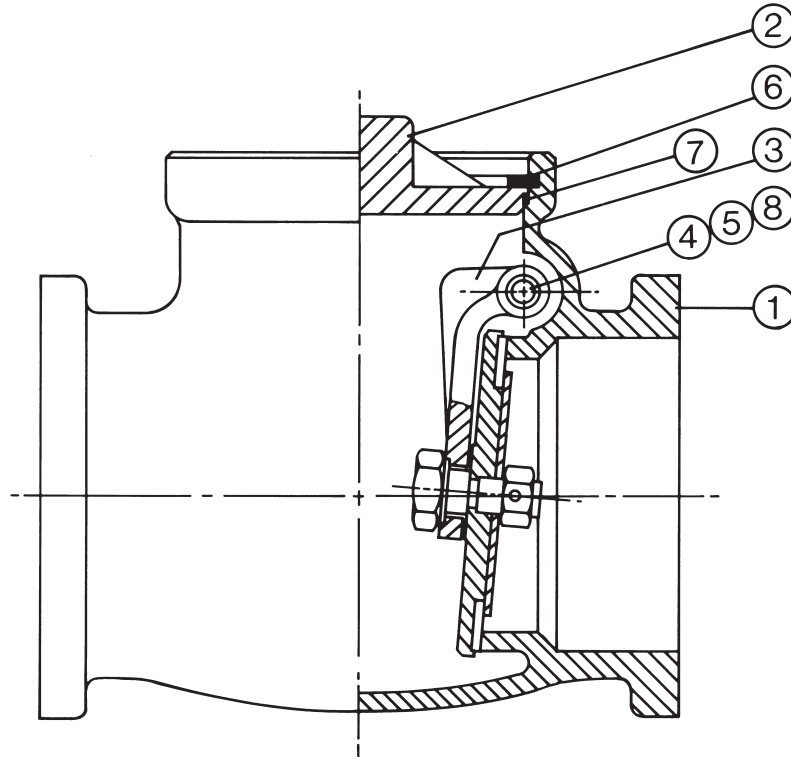
*Disc Assembly No. 9 includes Part Nos. 3, 4, 7, 8

P-509S Only

No.	DESCRIPTION	SIZE-INCHES/PART NUMBER									
		1/4	3/8	1/2	3/4	1	1 1/4	1 1/2	2	2 1/2	3
1	Body	1516-B	1516-C	1516-D	1516-E	1516-F	1516-G	1516-H	1516-J	--	--
2	Cap	4046-D	4046-D	4046-D	4046-E	4046-F	4046-G	4046-H	4046-J	--	--
3	Lever	4416-B	4416-G	4416-B	4416-E	4416-F	4416-G	4416-H	4416-J	--	--
5	Disc Holder	39143-D	39143-D	39143-D	39143-E	39143-F	39143-G	39143-H	39143-J	--	--
5	Plug	4210-B	4210-B	4210-B	4210-E	4210-F	4210-F	4210-H	4210-J	--	--
6	Pin	5979-B	5979-B	5979-B	5979-C	5979-D	5979-E	5979-F	5979-H	--	--
7	Disc Retainer	52125-185	52125-185	52125-185	52125-185	52125-185	52125-185	52125-239	52125-239	--	--
8	Disc Nut	3015-B	3015-B	3015-B	3016-B	3016-B	3014-B	3018-Z	3018-Z	--	--
9	Composition Disc	38142-D	38142-D	38142-D	38142-E	38142-F	38142-G	38142-H	38142-J	--	--

Milwaukee

SWING CHECK P-2519A REPAIR PARTS LIST



Section C
Dry Bulk Trailer Parts

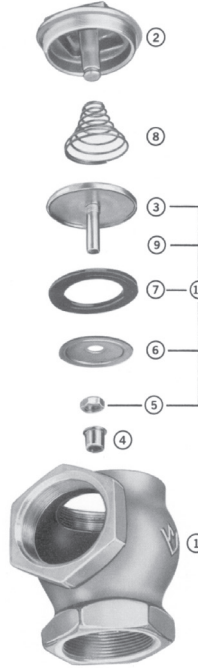
No.	DESCRIPTION	MATERIAL	SIZE-INCHES/ PART NUMBER
			3
1	Body	Aluminum	15147-L
2	Cap	Aluminum	40290-L
3	Lever	Aluminum	445-L
4	Plug	St. Steel	42124-L
5	Pin	St. Steel	5979-L
6	Retaining Ring	Carbon Steel	52109-362
7	O-Ring	Buna-N	65118-043
8	Lever Bushing	Teflon *	4171-L
REPAIR KITS			
Disc-Lever Assembly (Incl. Lever Bushing)			84033-L

*Registered E.I. DuPont Trademark

Milwaukee

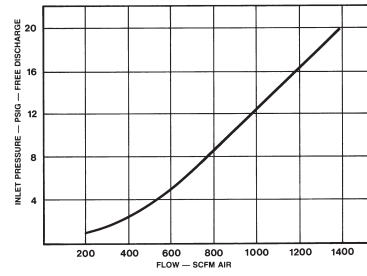
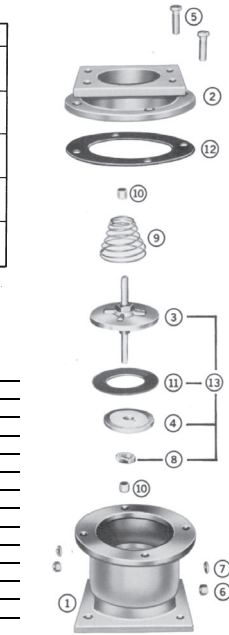
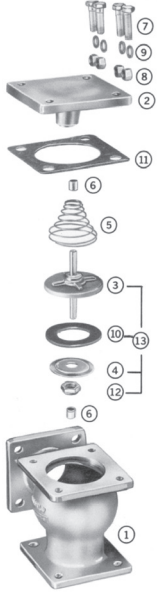
ANGLE LIFT CHECK P-717-F REPAIR PARTS LIST

NO.	DESCRIPTION	PART NO.
1	Body	15129-K
2	Cap	40258-K
3	Disc Guide	84284-K
4	Pinch Washer	38220-K
5	Spring	70163-K
6	Bearing	4165-L
7	Cap Screw	4256-M
8	Hex Nut	3198-C
9	Lock Washer	38084-C
10	Seat Disc	38180-K
11	Gasket	66144-K
12	Lock Nut	31139-H
13	Disc Assembly Complete	84253-K



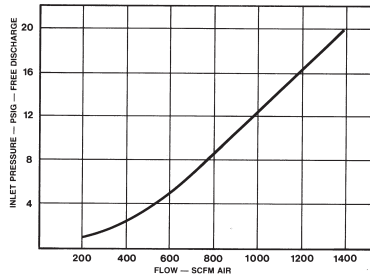
ANGLE CHECK P-717S REPAIR PARTS LIST

NO.	DESCRIPTION	PART NO.
1	Body	15119-J
2	Cap	4061-J
3	Disc Holder	39114-J
4	Bearing	4165-L
5	Disc Nut	3159-F
6	Retaining Plate	3884-J
7	Seat Disc	38180-J
8	Spring	70163-J
9	Disc Guide	4620-J
10	Disc Assembly	84459-J

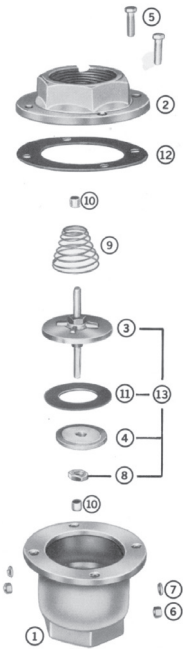


NO.	DESCRIPTION	PART NO.
1	Body	1545-L
2	Top	40266-L
3	Disc Guide	84284-L
4	Pinch Washer	38220-L
5	Cap Screw (4 req.)	4256-M
6	Hex Nut (4 req.)	3198-C
7	Lock Washer (4 req.)	38084-C
8	Lock Nut	31139-H
9	Spring	70163-L
10	Bearing	4165-L
11	Seat Disc	38180-L
12	Gasket	66146-L
13	Disc Assembly Complete	84258-L

LIFT CHECK P-728 REPAIR PARTS LIST



NO.	DESCRIPTION	PART NO.
1	Body	1539-L
2	Top	40260-L
3	Disc Guide	84284-L
4	Pinch Washer	38220-L
5	Cap Screw (4 req.)	4256-M
6	Hex Nut (4 req.)	3198-C
7	Lock Washer (4 req.)	38084-C
8	Lock Nut	31139-H
9	Spring	70163-L
10	Bearing	4165-L
11	Seat Disc	38180-L
12	Gasket	66146-L
13	Disc Assembly Complete	84258-L



Section C
Dry Bulk Trailer Parts